

**DESCRIEREA ANSAMBLURILOR EXPOZIȚIONALE**

**Ansamblu expozițional „STONE AGE KIDS”**

**STONE AGE KIDS**

- themed areas -



**Intrare 1**

Length/Width: 250 x 100 cm. Height: 230 cm



**Intrare 2**

Length/Width: 250 x 100 cm. Height: 230 cm



**Dinozaurii**

Length/Width: 400 x 300 cm. Height: 200 cm



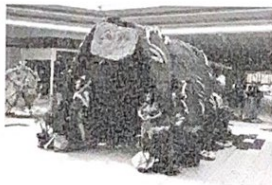
**Omul pesterii**

Length/Width: 50 x 50 cm. Height: 150 cm  
2 pcs male/female



**Mamutul**

Length/Width: 300 x 300 cm. Height: 150 cm



**Pestera - focul**

Length/Width: 400 x 300 cm. Height: 220 cm  
Electricity connection 220 V. 2 outlets



**Uneltele**

Length/Width: 200 x 200 cm. Height: 200 cm



**Comunicarea**

Length/Width: 200 x 200 cm. Height: 200 cm



**Roata**

Length/Width: 200 x 200 cm. Height: 200 cm



**Photo corner - masinuta**

Length/Width: 200 x 200 cm. Height: 180 cm



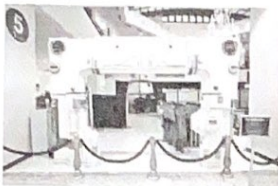
**Photo corner - perete piatra**

Length/Width: 200 x 40 cm. Height: 150 cm

## Ansamblu expozițional „FIRST KIDS ON MARS”

### FIRST KIDS ON MARS

- themed areas -



#### Intrare

Length/Width: 400 x 100 cm. Height: 270 cm



#### Sistemul Solar

Length/Width: 100 x 100 cm. Height: 80 cm  
Electricity connection: 220 V, 1 outlet



#### Constelatile

Length/Width: 200 x 800 cm. Height: 170 cm



#### Realitate augmentata

Length/Width: 100 x 100 cm. Height: 80 cm  
Electricity connection: 220 V, 1 outlet



#### Masa gravitacionala

Length/Width: 200 x 100 cm. Height: 140 cm  
Electricity connection: 220 V, 1 outlet



#### Gravitatie planetelor - 7 buc

Length/Width: 100 x 100 cm. Height: 80 cm  
Electricity connection: 220 V, 2 outlets



#### Planeta Marte

Length/Width: 250 x 100 cm. Height: 180 cm  
Electricity connection: 220 V, 1 outlet



#### Panou lansare racheta

Length/Width: 150 x 100 cm. Height: 130 cm  
Electricity connection: 220 V, 1 outlet



#### Racheta

Length/Width: 350 x 350 cm. Height: 450 cm  
Electricity connection: 220 V, 1 outlet



#### Roverul Curiosity

Length/Width: 400 x 500 cm. Height: 180 cm  
Electricity connection: 220 V, 1 outlet



#### Laborator plante/geologie

Length/Width: 450 x 350 cm. Height: 220 cm



#### Photo corner: steag

Length/Width: 250 x 150 cm. Height: 160 cm



Ansamblu expozițional „WILD WEST KIDS”

## WILD WEST KIDS

- themed areas -



**Intrare 1**

Length/Width: 350 x 100 cm. Height: 220 cm



**Intrare 2**

Length/Width: 300 x 100 cm. Height: 220 cm



**Oraselul din desert**

Length/Width: 250 x 100 cm. Height: 200 cm (each)



**Mina de aur**

Length/Width: 500 x 300 cm. Height: 200 cm



**Cursa de cai**

Length/Width: 500 x 500 cm. Height: 200 cm  
Adaptable to any architecture



**Tabara cowboy**

Length/Width: 400 x 300 cm. Height: 200 cm  
Electricity connection: 220 V, 1 outlet



**Indienii**

Length/Width: 400 x 300 cm. Height: 220 cm  
Electricity connection: 220 V, 1 outlet



**Banditii**

Length/Width: 400 x 300 cm. Height: 220 cm  
Electricity connection: 220 V, 2 outlets



**Photo corner - Wanted**

Length/Width: 450 x 150 cm. Height: 200 cm

**PROEDUS**  
**DIRECTOR**

**PARTENER,**  
**Administrator**

**Director Adjunct**

Avizat **JURIDIC,**

Avizat  
**Şef Serviciu Dezvoltare Educațională**

Avizat,  
**Şef Birou Muzeul Copiilor**

Infocmit,  
**Consilier Biroul Muzeul Copiilor**